

**Design : Various**

**Composition : 85% wool / 15% Polyamide**

**Coulourways : 12 (Digital representation only)**

**Width: 150 cm**

**Weight : Approximately 350 g / Lin. m**

**Weight (Etage) : Approximately 406 g / Lin. m**

**Abrasion : 50,000 rubs Martindale Test**

**Pilling : Note 3. EN ISO 12945**

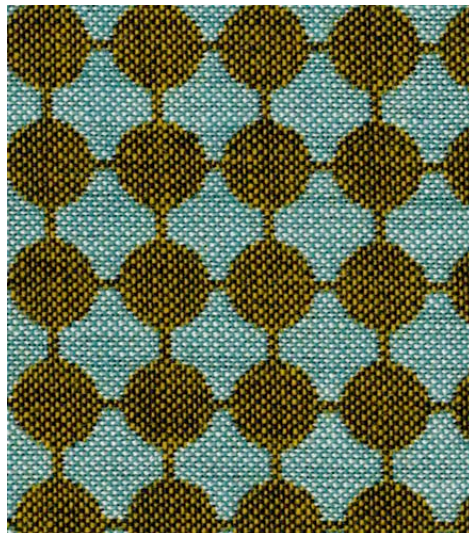
**Fire Certificates : BS EN 1021 1&2.**

**Light Fastness : 5-7 IOS 105-B02**

**Repeat: Width xs Height**



**Bok (Repeat 2 x 2 cm)**



**Cent (Repeat 2 x 2 cm)**



**Etage (Repeat 4 x 4 cm)**



**Infra (Repeat 48 cm)**



**Kjal (Repeat 50 x 66.5 cm)**



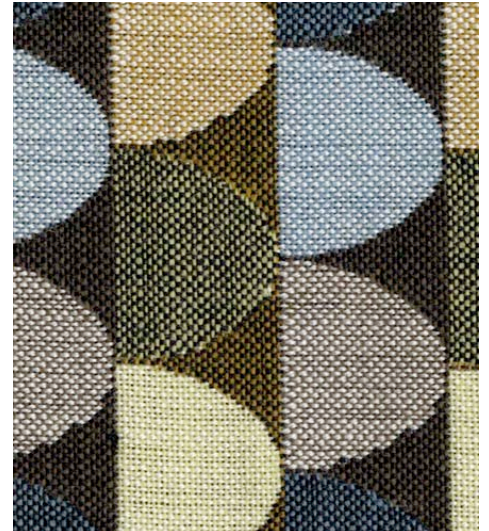
**Lux (Repeat 24 x 21.5 cm)**



**Nest (Repeat 115 cm)**



**Pop (Repeat 9 x 5 cm)**



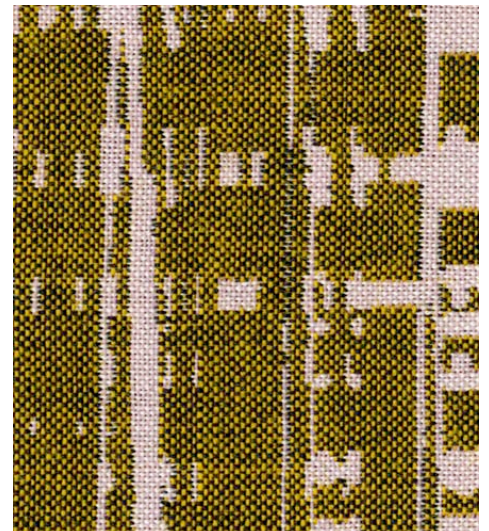
**Riff (Repeat 9x5 cm)**



**River (Repeat 2 x 6 cm)**



**Ruby (Repeat 4 x 4 cm)**



**Silk (Repeat 10.5 x 151 cm)**