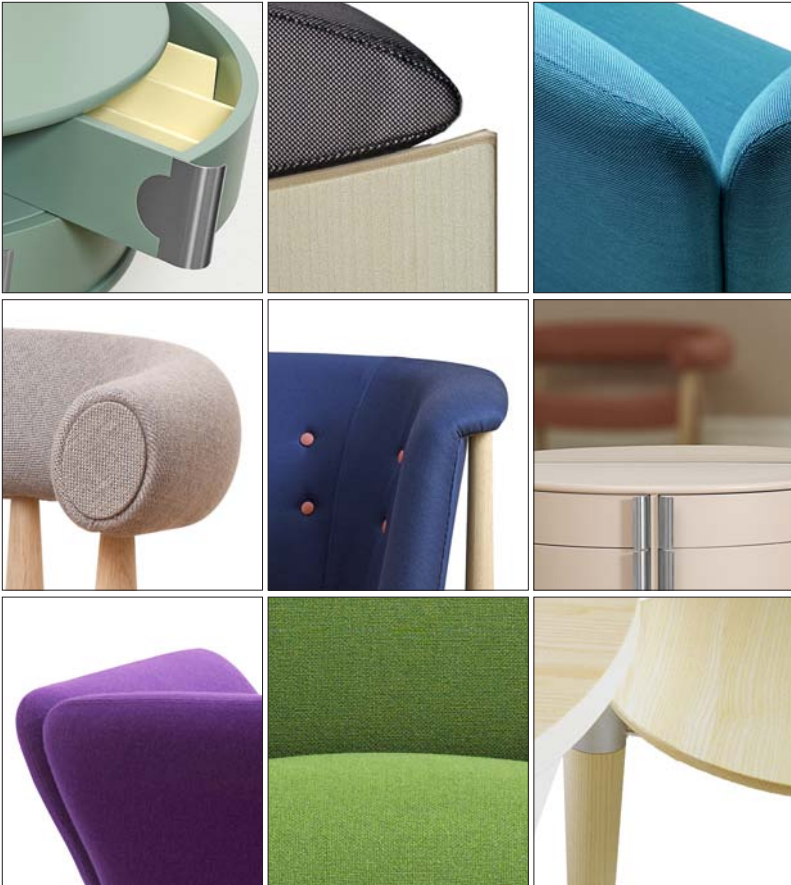


Schiang

FURNITURE

DESIGN NANNA DITZEL





Nanna Ditzel: 1923 - 2005

Born in Copenhagen in 1923. Nanna Ditzel trained as a cabinetmaker before studying at the School of Arts and Crafts and the Royal Academy of Fine Arts in Copenhagen.

She graduated in furniture design in 1946 and established her own design studio the same year together with Jørgen Ditzel.

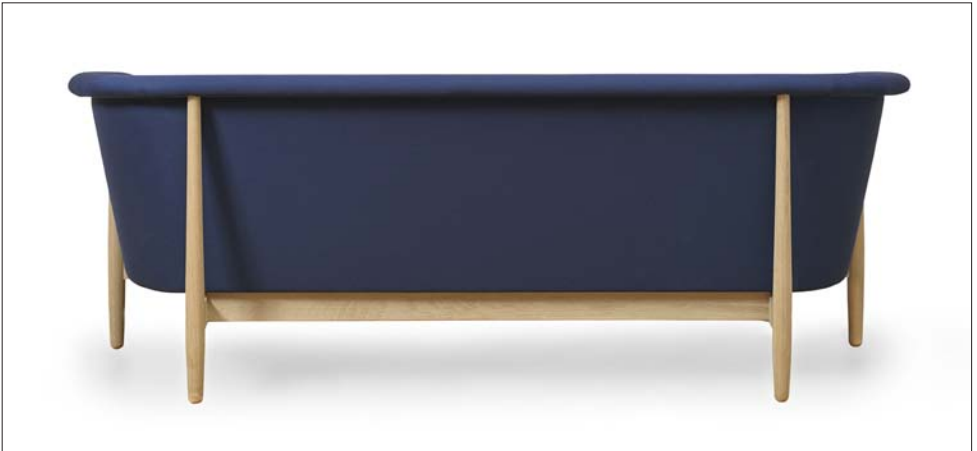
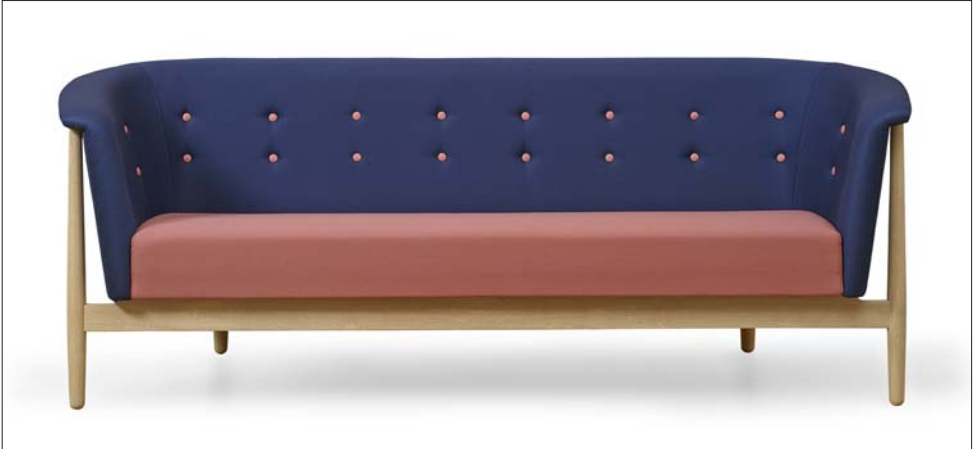
Nanna Ditzel continued designing until shortly before her death in Copenhagen in June 2005 completing her last designs for Getama in 2000.

From the outset of her career in the immediate post war period, she enjoyed the challenge of working with new materials and techniques. Nanna worked in various materials such as fibreglass, wickerwork and foam rubber, and in various disciplines such as cabinet-making, jewellery, tableware, applied art and textiles.

Awarded numerous international prizes including, in 1990, the Gold Medal in the International Furniture Design Competition in Japan. She was Elected Honourable Royal Designer, Royal Society of Arts, in London in 1996 and awarded the lifelong Artists' Grant by the Danish Ministry of Culture in 1998.

Many of her furniture, jewellery and textile designs are in current production including her collection produced by Getama.

VITA SOFA



MATERIALS : VITA SOFA

UPHOLSTERY : FABRIC ONLY

FRAME : OAK

**FINISHES : SOAPED, LACQUERED
OILED OR STAINED**

DESIGN : 1951
NANNA & JØRGEN DITZEL



DIMENSIONS : VITA

LENGTH : 192 CM

DEPTH : 71 CM

HEIGHT : 72 CM

SEAT HEIGHT : 40 CM

FABRIC REQ : 5.2 LM

RING CHAIR



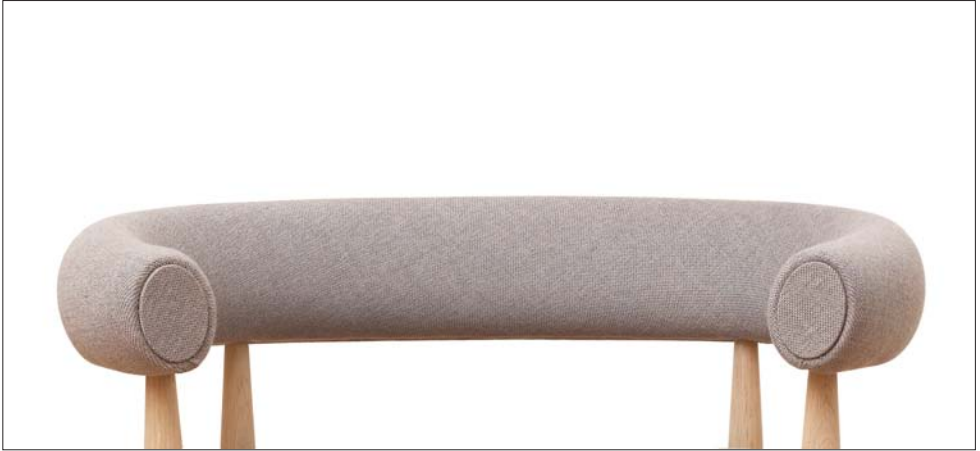
MATERIALS : RING CHAIR

UPHOLSTERY : FABRIC OR LEATHER

LEGS : OAK OR WALNUT

**FINISHES : SOAPED, LACQUERED
OILED OR STAINED**

DESIGN : 1958
NANNA & JØRGEN DITZEL



DIMENSIONS : **RING**

LENGTH : **85 CM**

DEPTH : **71 CM**

HEIGHT : **70 CM**

SEAT HEIGHT : **40 CM**

FABRIC REQ : **2.00 LM**

MONDIAL ARM CHAIR



MATERIALS : MONDIAL ARMCHAIRS

UPHOLSTERY : FABRIC ONLY

FEET : STAINLESS STEEL

**DESIGN : 2000
NANNA DITZEL**



DIMENSIONS : MONDIAL
(With Low Arms) .

LENGTH : 78 CM
DEPTH : 74 CM
HEIGHT : 74 CM
ARM HEIGHT : 59 CM
SEAT HEIGHT : 45 CM
FABRIC REQ : 3.40 LM

DIMENSIONS : MONDIAL
(With High Arms) .

LENGTH : 83 CM
DEPTH : 74 CM
HEIGHT : 74 CM
ARM HEIGHT : 74 CM
SEAT HEIGHT : 45 CM
FABRIC REQ : 5.60 LM

**MODEL
MONDIAL SOFA**



MATERIALS : MONDIAL SOFA

UPHOLSTERY : FABRIC ONLY

FEET : STAINLESS STEEL

**DESIGN : 2000
NANNA DITZEL**



DIMENSIONS : MONDIAL
(Two Seat Sofa) .

LENGTH : 145 CM
DEPTH : 74 CM
HEIGHT : 74 CM
ARM HEIGHT : 74 CM
SEAT HEIGHT : 45 CM
FABRIC REQ : 6.75 LM

DIMENSIONS : MONDIAL
(Three Seat Sofa) .

LENGTH : 200 CM
DEPTH : 74 CM
HEIGHT : 74 CM
ARM HEIGHT : 74 CM
SEAT HEIGHT : 45 CM
FABRIC REQ : 8.25 LM

MONDIAL COFFEE TABLE



MATERIALS : MONDIAL COFFEE TABLE

TIMBER : OAK, ASH OR WALNUT

**FINISH : SOAPED OR LACQUERED
ASH CAN BE STAINED**

DESIGN : 2000
NANNA DITZEL



DIMENSIONS : TABLE

DIAMETER : 100 CM
HEIGHT : 48 CM

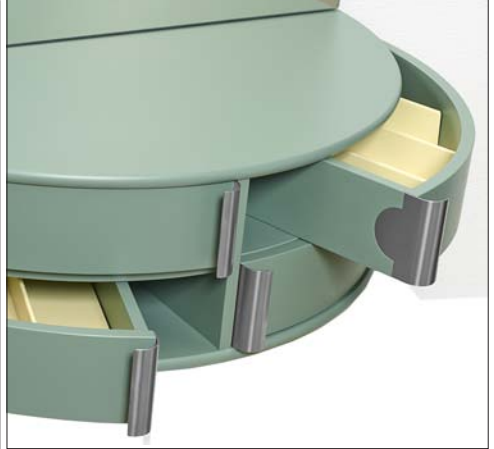
DIMENSIONS : LEAVES

DIAMETER : 36 CM

JOY BENCH**DESIGN : 1999
NANNA DITZEL****MATERIALS : JOY BENCH****UPHOLSTERY : FABRIC OR LEATHER****Frame : MAPLE NATURAL OR STAINED****FINISHES : LACQUERED ONLY****DIMENSIONS :****LENGTH : 120/140/180 CM****DEPTH : 47 CM****HEIGHT : 47 CM****SEAT HEIGHT : 47 CM****FABRIC REQ : 1.20/1.25/1.85****LM**

**JOY MAKE-UP MIRROR
WITH DRAWERS**

**DESIGN : 1999
NANNA DITZEL**



MATERIALS : JOY MAKE-UP

TIMBER : MAPLE

FINISH : LACQUERED OR STAINED

DIMENSIONS : JOY

LENGTH : 74 CM

DEPTH : 40 CM

HEIGHT : 146 CM

GETAMA[®]

DANMARK

Getama furniture meets all modern safety standards for durability and fire retardancy. The Getama logo is your guarantee that each individual piece of furniture is produced under exacting quality control using only the best materials according to Nanna Ditzel's original designs.

**Schiang
The Old Dairy
Tewin Hill Farm
Hertfordshire
AL6 0LL
Tel: 01707 324995
info@schiang.com**